

Im.PAc.T

HP02-00



## **HEAD & SHOULDER BASE PLATE**

Panacea Medical Technologies Pvt Ltd

Doc no: PMT-PA1-01-02-08-19-R01

## Table of Contents

<b>1</b>	<b>INTENDED USE AND INDICATIONS FOR USE</b>	<b>3</b>
1.1	INTENDED USE	3
1.2	INDICATION FOR USE	3
<b>2</b>	<b>PRODUCT OVERVIEW</b>	<b>3</b>
<b>3</b>	<b>ASSEMBLING INSTRUCTIONS</b>	<b>4</b>
3.1	Placement of Indexing bar	4
3.2	Compatible headrests & Accessories	4
3.3	Compatible masks	6
<b>4</b>	<b>TECHNICAL DETAILS</b>	<b>6</b>
<b>5</b>	<b>CLEANING, STORAGE AND DISPOSAL</b>	<b>6</b>

## 1 INTENDED USE AND INDICATIONS FOR USE

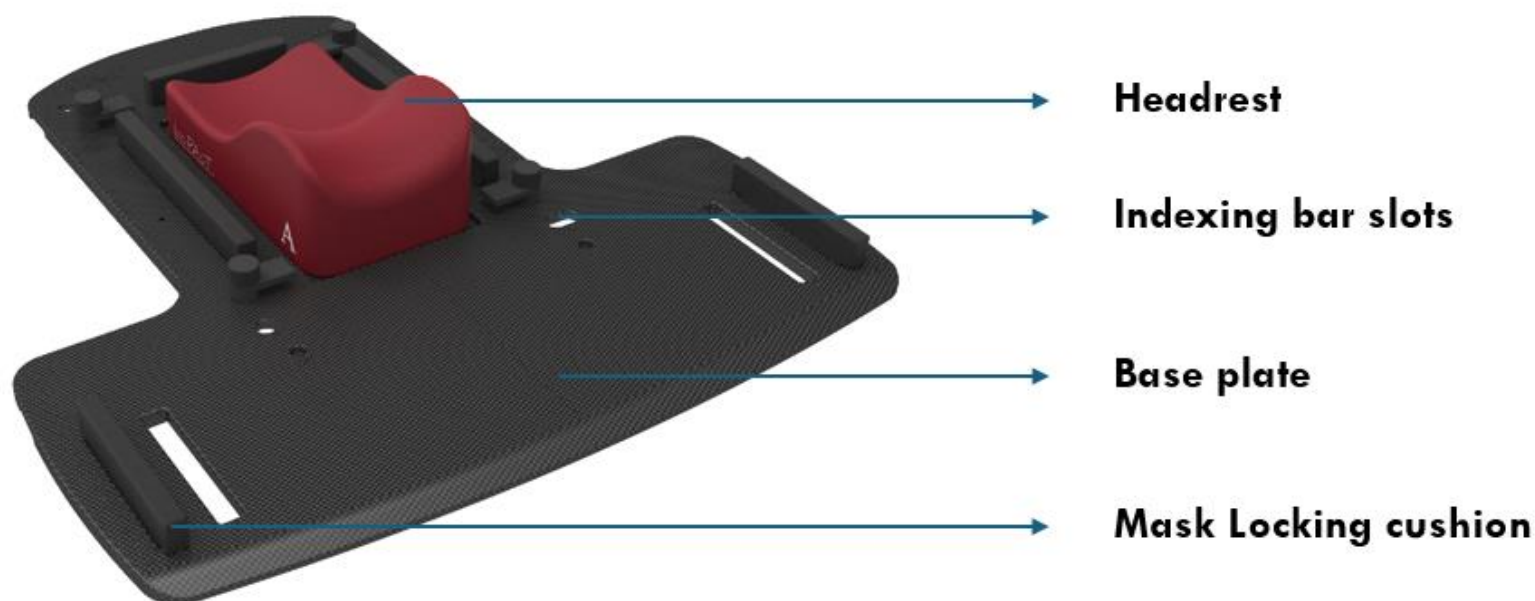
### 1.1 INTENDED USE

Intended to immobilize the head, neck, and shoulder region during external radiotherapy. Provides a stable and reproducible setup for accurate treatment delivery.

### 1.2 INDICATION FOR USE

The device is designed to assist in the positioning of patients undergoing external beam radiation therapy in the head, neck, and shoulder region. It is also used during image acquisition for treatment planning on a CT unit or simulator. The device is compatible with thermoplastic masks and other immobilization accessories.

## 2 PRODUCT OVERVIEW



*Figure 1 Head and shoulder base plate*



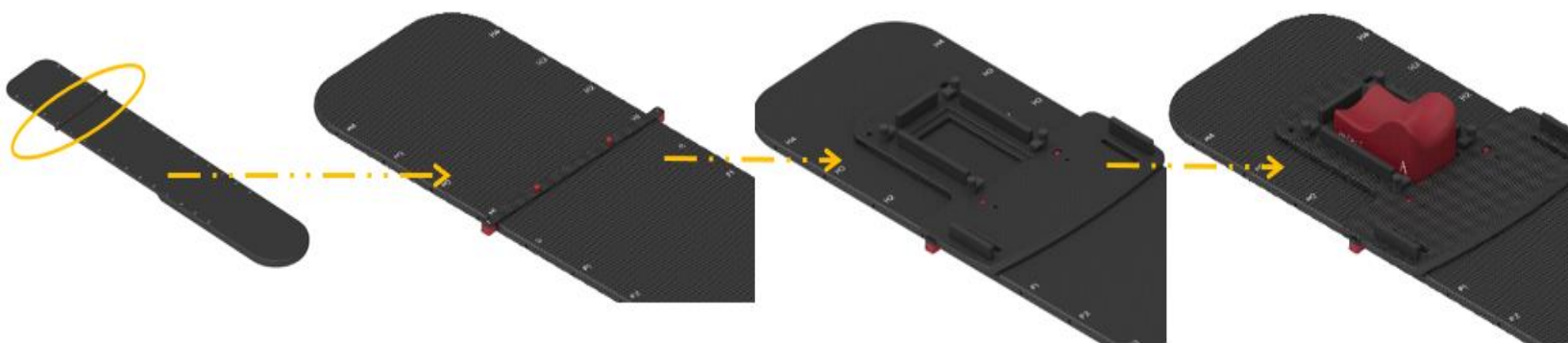
### Warning

- Inspect the device thoroughly before use. Do not use the device if damaged.
- Prevent the surface from damage and scratching.
- Secure the device properly before positioning the patient.

## 3 ASSEMBLING INSTRUCTIONS

### 3.1 Placement of Indexing bar

- Place indexing bar on the couch top and make sure that it has been fixed properly with the slots.
- Position the head and shoulder base plate above the indexing bars
- We have to ensure that there is no movement of base plate on indexing bars
- Place the suitable head rest required.



### 3.2 Compatible headrests & Accessories



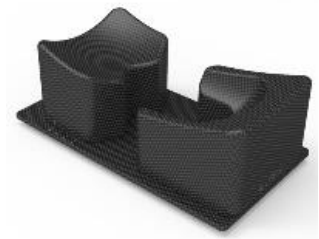
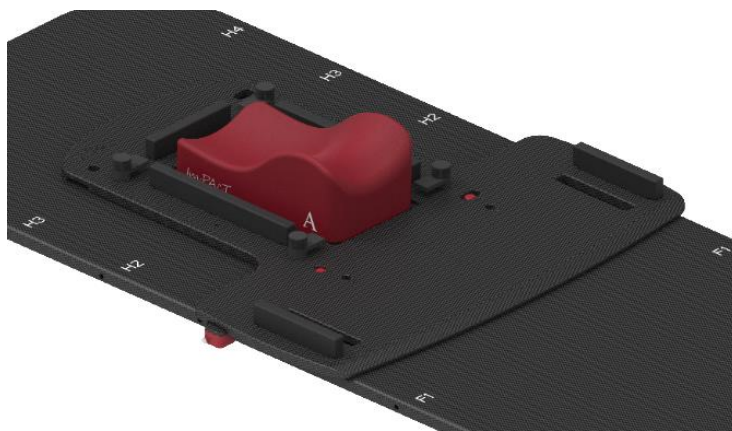
Carbon fiber headrests



Foam headrests

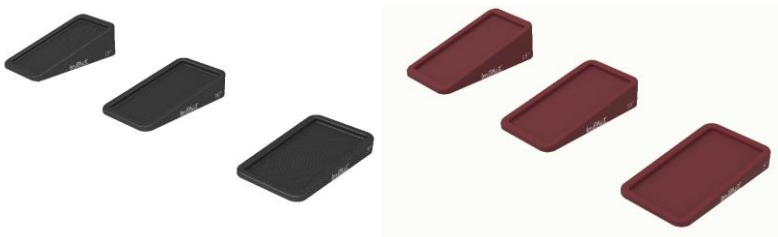


Posease headrests



Prone headrests

- Assemble the following devices (If required)
- Wedges for head angulation at 5°, 10°, and 15° to ensure accurate patient positioning during procedures. For patient comfort and height adjustment, elevation blocks are available in 20 mm and 40 mm sizes.
- Shoulder angulation is supported using blocks of 30 mm, 50 mm, and 70 mm to facilitate optimal shoulder positioning and alignment.
- Utilize the pediatric headrest with adopter for pediatric patients.
- Position the patient and fix the Clamp type thermoplastic mask with mask locking cushions to immobilize.



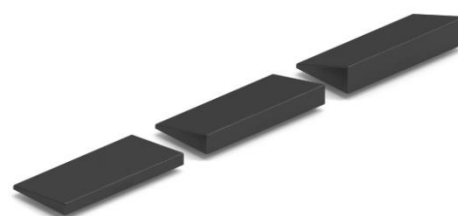
Head Wedges – Carbon fiber and Foam



Pediatric headrest with adapter



Head Elevation blocks



Shoulder wedges

### 3.3 Compatible masks

S.no	Masks
1	Head mask – 3 Point
2	Neck and shoulder mask – 4 Point
3	Head and shoulder mask - 5 Point

## 4 TECHNICAL DETAILS

1	Material used	Carbon fiber
2	Weight	0.495 kg
3	Weight bearing capacity	120kg

## 5 CLEANING, STORAGE AND DISPOSAL

- Avoid storing under the sun and in warm and wet environment.
- Wipe thoroughly with cleaning agent like Diluted Isopropyl Alcohol of 15-20%. Allow to dry before next use.
- Store each thermoplastic mask in the order of patient ID labelled and masks can be reused for the next fraction of treatment for the same patient.
- The mask should be reused based on the treatment plan and cycle.
- The product can be disposed of with dry waste.
- Inspect the product regularly, to check for any parts are worn or need repair or replacement.



**Panacea Medical Technologies Pvt Ltd**

Plot #35, Malur KIADB Industrial Area,  
4th Phase, Malur – 5631 30, Kolar District,  
Karnataka, INDIA.

Website : <http://www.panaceamedical.com>,

Email : [support@panaceamedical.com](mailto:support@panaceamedical.com)