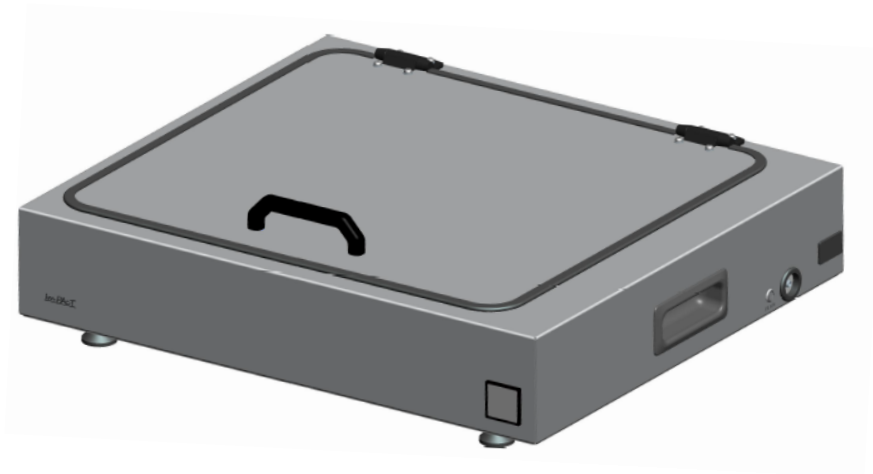


Im.PAc.T

HP02-00



WATERBATH ASSEMBLY

Panacea Medical Technologies Pvt Ltd

Doc no: PMT-PA1-01-29-08-19-R00

Table of Contents

1. GENERAL DESCRIPTION OF THE PRODUCT	3
1.1 ENVIRONMENTAL CONDITIONS	3
1.2 SAFETY INSTRUCTIONS & PRECAUTIONS	3
2. TECHNICAL SPECIFICATIONS	4
3. INSTRUCTIONS FOR USE	5
4. CLEANING, STORAGE AND DISPOSAL	6
5. TROUBLE SHOOTING.....	6

1. GENERAL DESCRIPTION OF THE PRODUCT

The Water bath is designed to soften patient immobilization thermoplastics (masks) that are compatibly heated with water for the specific temperature upto 70°C. This is electronically controlled and digitally adjustable to ensure the desired temperature for optimal moulding characteristics of materials.

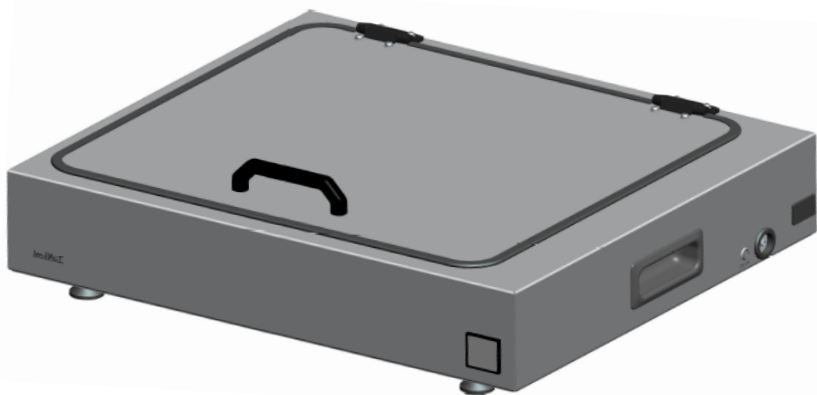


Figure 1 Water bath

1.1 ENVIRONMENTAL CONDITIONS

Temperature	60 °C ... 80 °C
Humidity	5% to 90% non-condensing
Atmospheric Pressure	50kPa to 106 kPa
Location	Clean & ventilated environment

1.2 SAFETY INSTRUCTIONS & PRECAUTIONS

- Do read this entire instruction sheet including notes and warnings before proceeding to operate this equipment.
- Do Not attempt to operate the Water bath with the lid / cover top kept open.
- Do position the Water bath such that the power cord is easily accessible.
- Do position the Water bath on a sturdy, flat level countertop that provides solid footing for all four (4) bottom feet.
- Do Not operate the Water bath , if it is damaged in any way.
- No user serviceable parts inside. Do not open or disassemble the equipment.

- This equipment must be grounded and is supplied with an appropriately grounded power cord. Do not modify the power cord.
- Connect the equipment to the appropriate MAINS power.
- In case of emergency, disconnect the Power cord from mains power.

2. TECHNICAL SPECIFICATIONS

S. No	Specifications	Details
1.	Input supply	230V AC, 50Hz
3.	Outer dimensions	78.2 x 69.5 x 240 cm
4.	Weight	42.7 kg
5.	Operating temperature	60 °C - 80 °C
6.	Heating Time	5 – 6 minutes
7.	Heater voltage	230 V
8.	Filling capacity	26 L
9.	Max. filling height	70 mm
10.	Bath depth	98 mm



Warning

- Inspect the device thoroughly before use. Do not use the device if damaged.

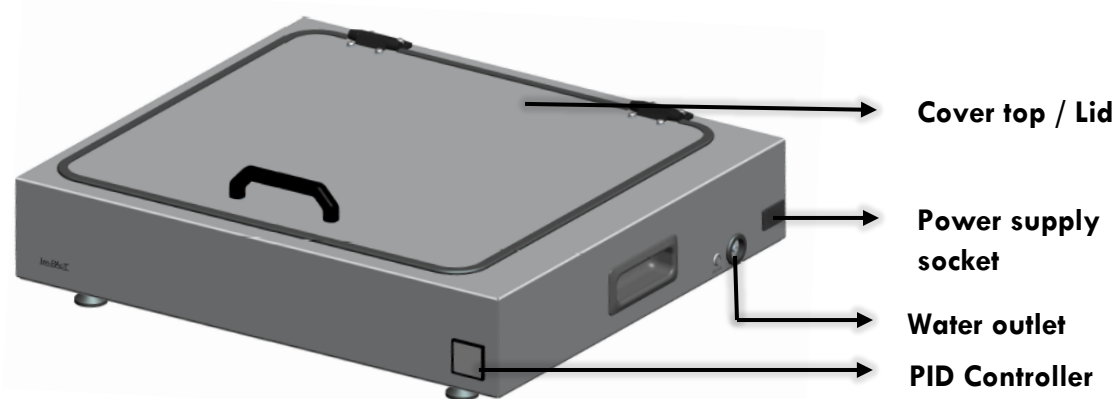
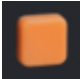


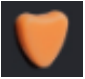



Figure 2 Water bath Components

3. INSTRUCTIONS FOR USE

- Connect the power cord to appropriate 230V AC, 50Hz MAINS power.
- Open the Lid/ Cover top of the water bath.
- Ensure water is been added to the maximum marking level in the waterbath, before turning ON the power switch.
- Place the thermoplastic mask along with the thermoplastic holding tray and close the Cover top/lid.
- Press the power switch “ON”
- By default, set temperature is fixed at 70 °C for 5 – 6 Minutes and it can be adjustable by the user by using the keys as mentioned below.
- To adjust the temperature,

S.no	Instruction	Action	Keys
1.	To increase the temperature	Constantly press the “SET” Key along with the long press of the temp increase key on the PID Controller.	 + 
2.	To decrease the temperature	Constantly press the “SET” Key along with the long press of the temp decrease key on the PID Controller.	 + 
3.	To view the Set Temperature by the End user	Press the “SET” Key on the PID Controller.	

- The temperature shown on the display is the current temperature of the water in the waterbath.
- After completion switch “OFF” the heater supply after use.
- Then drain the water from the water outlet by means of solenoid valve.

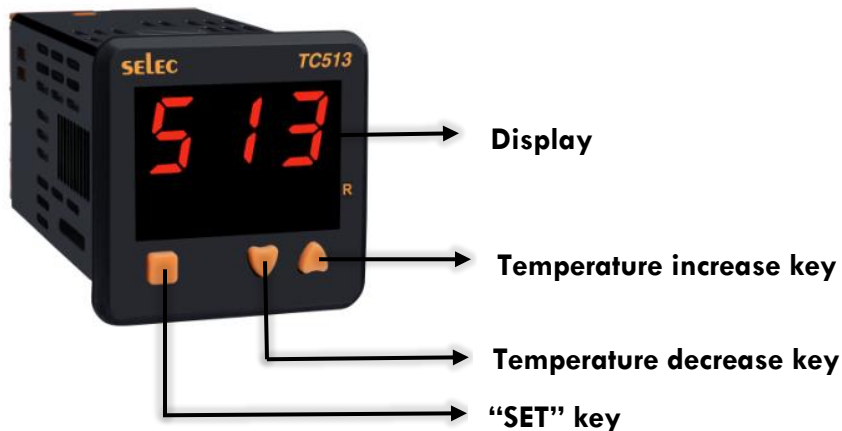


Figure 3 PID Controller

4. CLEANING & STORAGE

- Turn off equipment power and disconnect from MAINS supply before cleaning.
- Allow equipment to dry completely before use.
- Store the machine in a clean and ventilated environment.
- Inspect the product regularly, to check for any parts that are worn or need repair or replacement.

5. TROUBLE SHOOTING

S.no	Cause of the Problem		Remedy
1.	Water bath will not turn ON.	Power cord is not properly inserted into MAINS Socket.	Check that the power cord is securely inserted into the proper MAINS Socket.
		Power cord is disconnected from power entry module.	Check that the power cord is securely inserted into the Power. Entry Module Socket.
		Power entry module switch is OFF.	Push the switch to the ON position.
		Power entry module Fuse has failed.	Pull out the Power cord from power supply and change the fuse in Fuse holder.
		No power at MAINS Socket.	Check that MAINS in power Socket is functioning properly.

3.	Water bath is ON but not heating.	Check the ON/OFF Cycle Button Position	OFF the cycle Push Button and again turn it ON
4.	Water bath stops heating	Power entry module Fuse has failed.	Pull out the Power cord from power supply and change the fuse in the fuse holder.



Panacea Medical Technologies Pvt Ltd

Plot #35, Malur KIADB Industrial Area,
4th Phase, Malur – 5631 30, Kolar District,
Karnataka, INDIA.

Website : <http://www.panaceamedical.com>,

Email : support@panaceamedical.com