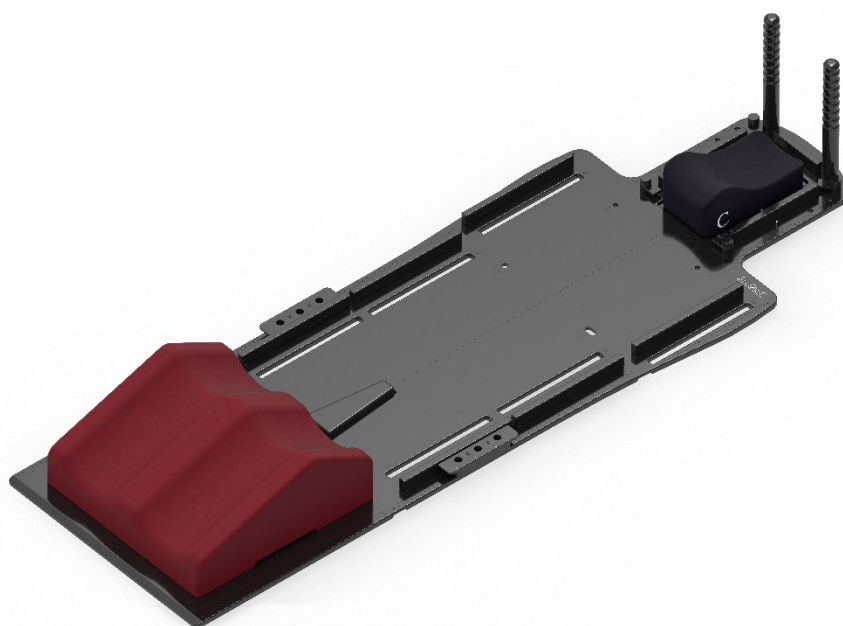


Im.PAc.T

**SL32-00**



## **SIGMA LITE BOARD**

**Panacea Medical Technologies Pvt Ltd**

**Doc no: PMT-PA1-01-32-08-19-R01**

# Table of Contents

1 INTENDED USE AND INDICATIONS FOR USE ..... 3

1.1 INTENDED USE..... 3

1.2 INDICATION FOR USE ..... 3

2. PRODUCT OVERVIEW ..... 3

3. ASSEMBLING INSTRUCTIONS ..... 4

3.1 Placement of Indexing bar ..... 4

3.2 Compatible headrests & Accessories..... 5

3.3 Compatible mask..... 6

4 TECHNICAL SPECIFICATIONS ..... 6

5 CLEANING, STORAGE AND DISPOSAL ..... 6

## 1 INTENDED USE AND INDICATIONS FOR USE

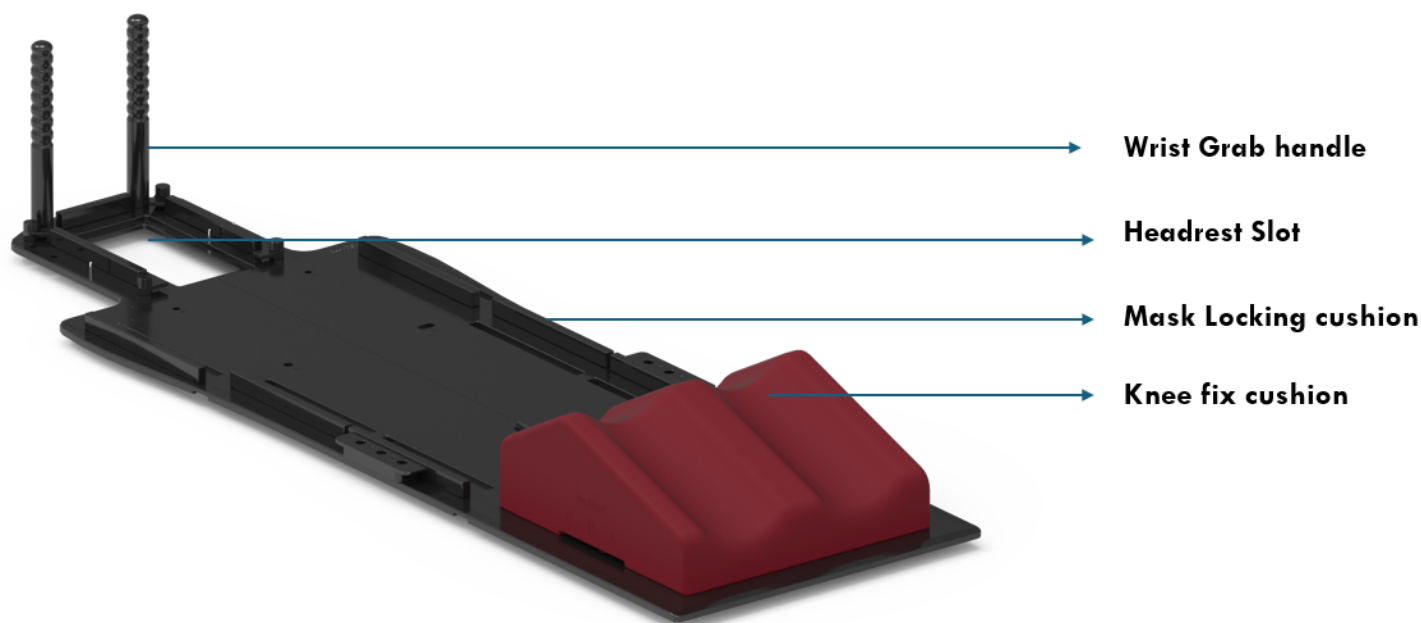
### 1.1 INTENDED USE

Sigma lite board is intended to provide a stable and comfortable platform for immobilizing and positioning patients during radiation therapy sessions to cover all parts of the body from head to knee region.

### 1.2 INDICATION FOR USE

To aid in the positioning of patients undergoing External radiation therapy used to immobilize the patient in a specific position during treatment to minimize movement and ensure precise targeting of the radiation beams of the brain, head, neck, Shoulder, abdomen, belly, or pelvis during photon treatments. It helps in reproducing the patient's position for each treatment session, ensuring consistency in the delivery of radiation therapy, and minimizing errors.

## 2. PRODUCT OVERVIEW



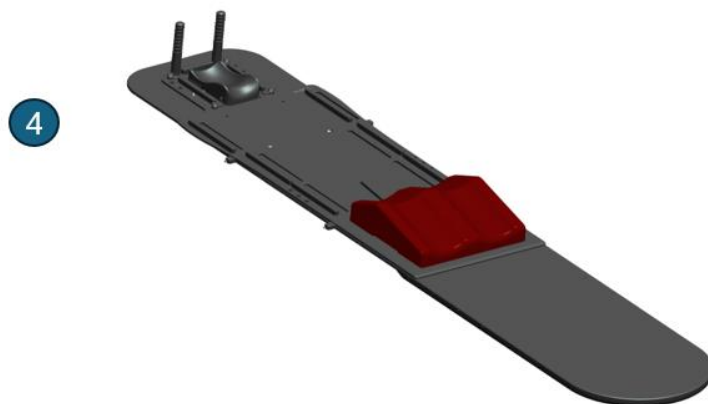
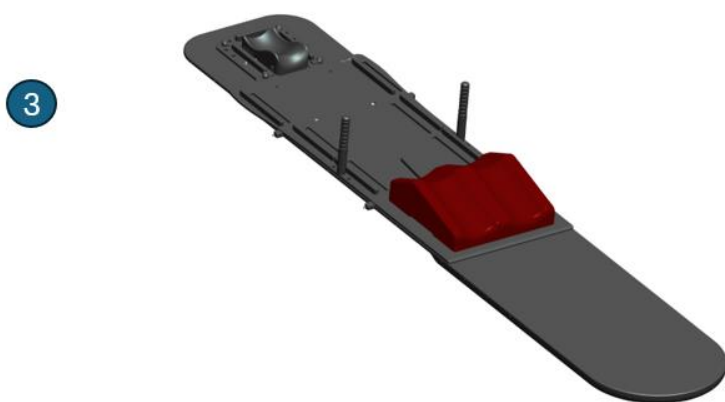
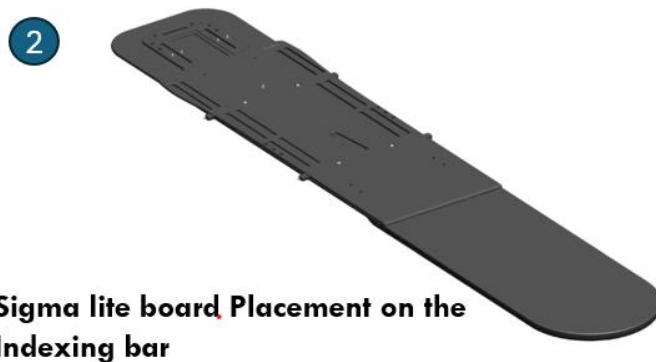
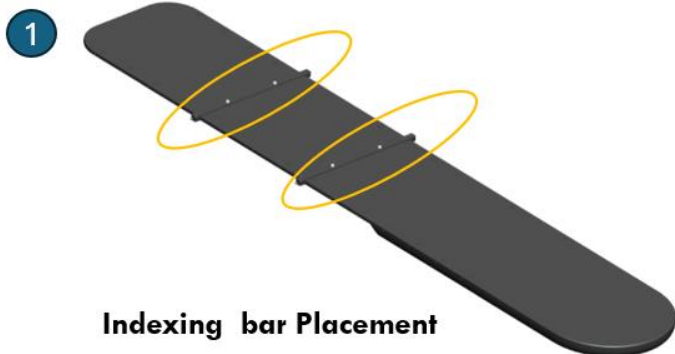
*Figure 1 Sigma lite board*



#### Warning

- Inspect the device thoroughly before use. Do not use the device if damaged.
- Prevent the surface from damage and scratching.
- Secure the device properly before positioning the patient.

### 3. ASSEMBLING INSTRUCTIONS



#### 3.1 Placement of Indexing bar

**Step 1:** Place 2-indexing bars on the Couch Top and make sure that it has been fixed properly in the slots.

**Step 2:** Position the sigma lite board above the indexing bars and movement should not be there in baseplate

**Step 3:** Place the suitable headrest and other accessories required, fix the kneefix cushion using the kneefix indexing bar according to the patient's height and place the kneefix onto slots A, B, or C with K1, K2 positions and if further height adjustment is needed, utilize the Knee fix elevation block.

### 3.2 Compatible headrests & Accessories



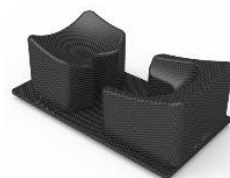
Carbon fiber headrests



Foam headrests



Posease headrests

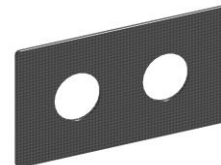


Prone headrests

- Assemble the other necessary devices (If required)
- Wedges for head angulation at 5°, 10°, and 15° to ensure accurate patient positioning during procedures. For patient comfort and height adjustment, elevation blocks are available in 20 mm and 40 mm sizes.
- Utilize the pediatric headrest with adapter for pediatric patient.
- Position the patient and fix the Clamp type thermoplastic mask with mask locking cushions to immobilize.



Wedges



Pediatric headrest with adapter



Head Elevation blocks

### 3.3 Compatible mask

S.no	Mask type
1	Head mask – 3 Points
2	Neck and shoulder mask – 4 Points
3	Head and shoulder mask - 5 Points
4	Chest and pelvic mask – 4 Points
5	Pelvic mask – 6 Points
6	Breast mask

## 4 TECHNICAL SPECIFICATIONS

1	Material	Carbon fiber
2	Weight	6.685 kg (with all accessories)
3	Weight bearing capacity	120 kg

## 5 CLEANING, STORAGE AND DISPOSAL

- Avoid storing under the sun and in warm and wet environment.
- Wipe thoroughly with cleaning agent like Diluted Isopropyl Alcohol of 15-20%. Allow to dry before next use.
- Store each thermoplastic mask with respective to patient ID and masks can be reused for the next cycle of treatment for the same patient.
- The mask can be reused based on the treatment plan and cycle.
- The product can be disposed of with dry waste.
- Inspect the product regularly, to check for any parts are worn or need repair or replacement.



**Panacea Medical Technologies Pvt Ltd**

Plot #35, Malur KIADB Industrial Area,

4th Phase, Malur – 563130, Kolar District,

Karnataka, INDIA.

Website : <http://www.panaceamedical.com>,

Email : [support@panaceamedical.com](mailto:support@panaceamedical.com)