



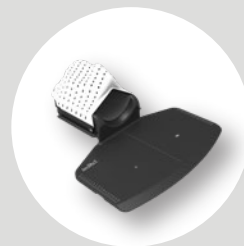
SRS System



The IMPACT SRS Board is engineered for precise immobilization during cranial radiotherapy treatments. Constructed entirely from high-quality carbon fiber, it provides exceptional durability, minimal beam attenuation and a lightweight design for easy handling and setup. The board is fully compatible with 3-clamp head masks, ensuring accurate and reproducible patient positioning, which is critical for stereotactic radiosurgery (SRS).

Salient features:

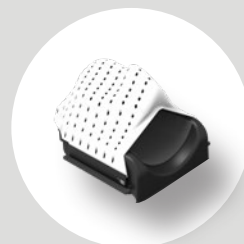
- ✓ Anatomically Contoured Head Support
- ✓ Seamless Integration with Couch Tops



SRS board
SRS31-00



SRS Base Plate
SRS31-01



SRS Mask
SRS31-03