

Im.PAc.T

SRS31-00



SRS BOARD

Panacea Medical Technologies Pvt Ltd

Doc no: PMT-PA1-01-31-08-19-R00

Table of Contents

1	INTENDED USE AND INDICATIONS FOR USE	3
1.1	INTENDED USE	3
1.2	INDICATION FOR USE	3
2	PRODUCT OVERVIEW	3
3	ASSEMBLING INSTRUCTIONS	4
4	TECHNICAL SPECIFICATIONS	5
5	CLEANING, STORAGE AND DISPOSAL	5

1 INTENDED USE AND INDICATIONS FOR USE

1.1 INTENDED USE

SRS (Stereotactic Radiosurgery) is a specialized form of radiation therapy that delivers a high dose of radiation to a precise target in the body. It's often used to treat small tumors or lesions in the brain, head, or neck. An SRS board is used to precisely position the patient's head during SRS treatment and planning.

1.2 INDICATION FOR USE

The SRS board is designed to immobilize the patient's head and precisely Positioning the patient's head for SRS treatment plays a crucial role. This immobilization is crucial for accurate delivery of radiation to the target area while minimizing exposure to surrounding healthy tissues. The use of an SRS board is typically part of the treatment planning process for SRS procedures. Imaging techniques such as CT scans are used in conjunction with the SRS board to precisely map out the location of the tumor and plan the optimal radiation treatment strategy.

2 2 PRODUCT OVERVIEW

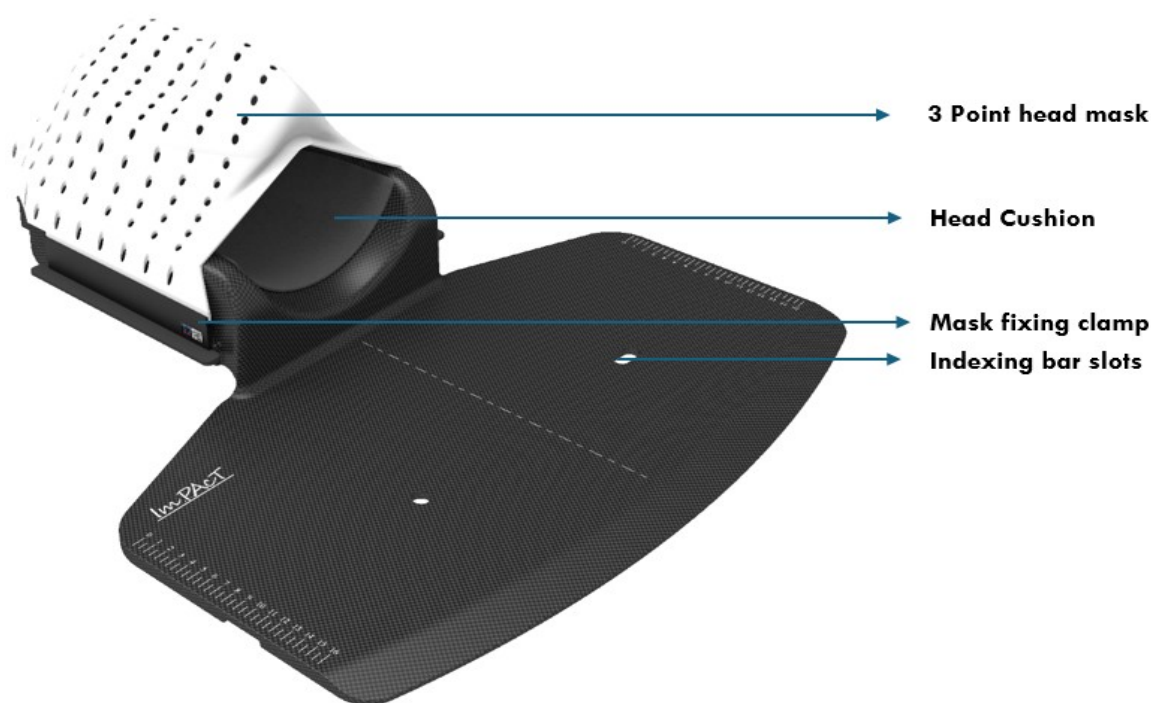


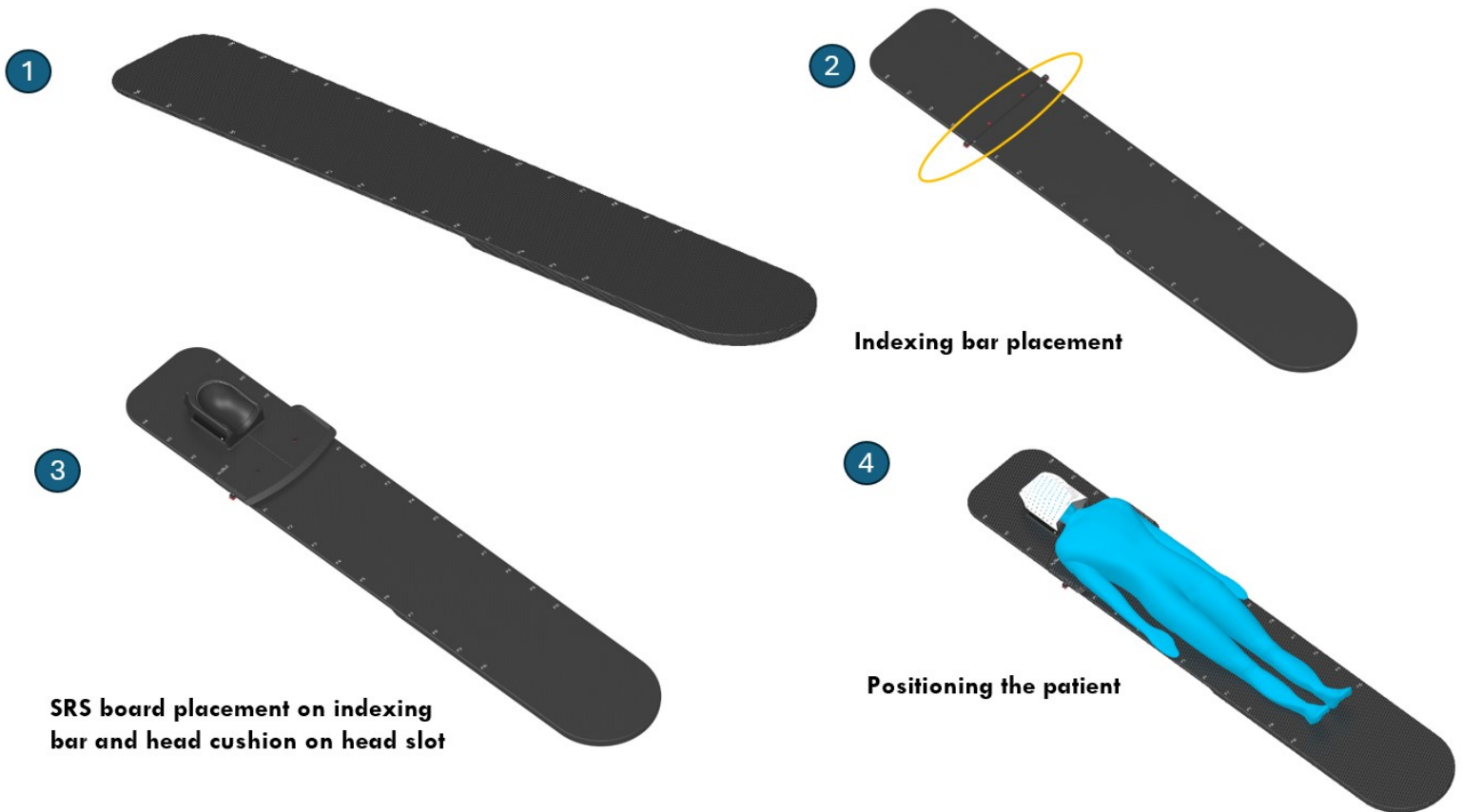
Figure 1 SRS board



Warning

- Inspect the device thoroughly before use. Do not use the device if damaged.
- Prevent the surface from damage and scratching.
- Secure the device properly before positioning the patient.

3 ASSEMBLING INSTRUCTIONS



Step 1: Place the Indexing bar on the Couch Top and make sure that it has been fixed properly with the slots

Step 2: Position the SRS board above the Indexing bar and ensure there is no movement in the Indexing bar and the base plate.

Step 3: Place the head cushion on the head slot

Step 4: Position the patient and place the 3-point head mask with mask locking clamp to immobilize.

4 TECHNICAL SPECIFICATIONS

1	Material	Carbon fiber
2	Weight	1.63 kg
3	Weight bearing capacity	120 kg
4	Mask locking Cushion material	Foam

5 CLEANING, STORAGE AND DISPOSAL

- Avoid storing under the sun and in warm and wet environment
- Wipe thoroughly with cleaning agent like Diluted Isopropyl Alcohol of 15-20%. Allow to dry before next use
- Store each thermoplastic mask and cushion with respective to patient ID and mask and cushion can be reused for the next cycle of treatment for the same patient.
- The decision to reuse the mask and cushion should be based on the treatment plan and cycle
- The product can be disposed of with dry waste
- Inspect the product regularly, to check for any parts are worn or need to repair or replacement

Panacea Medical Technologies Pvt Ltd

Plot #35, Malur KIADB Industrial Area,

4th Phase, Malur – 563130, Kolar District,

Karnataka, INDIA.

Website : <http://www.panaceamedical.com>,

Email : support@panaceamedical.com



PANACEA

Engineering Medicine