

Im.PAc.T

THP03-00



## **TILTING HEAD BASEPLATE**

Panacea Medical Technologies Pvt Ltd

Doc no: PMT-PA1-01-03-08-19-R00

## Table of Contents

<b>1</b>	<b>INTENDED USE AND INDICATIONS FOR USE .....</b>	<b>3</b>
1.1	INTENDED USE .....	3
1.2	INDICATION FOR USE .....	3
<b>2</b>	<b>PRODUCT OVERVIEW .....</b>	<b>3</b>
<b>3</b>	<b>ASSEMBLING INSTRUCTIONS .....</b>	<b>4</b>
1.3	Compatible headrest .....	5
<b>4</b>	<b>TECHNICAL SPECIFICATIONS.....</b>	<b>5</b>
<b>5</b>	<b>CLEANING, STORAGE AND DISPOSAL .....</b>	<b>6</b>

## 1 INTENDED USE AND INDICATIONS FOR USE

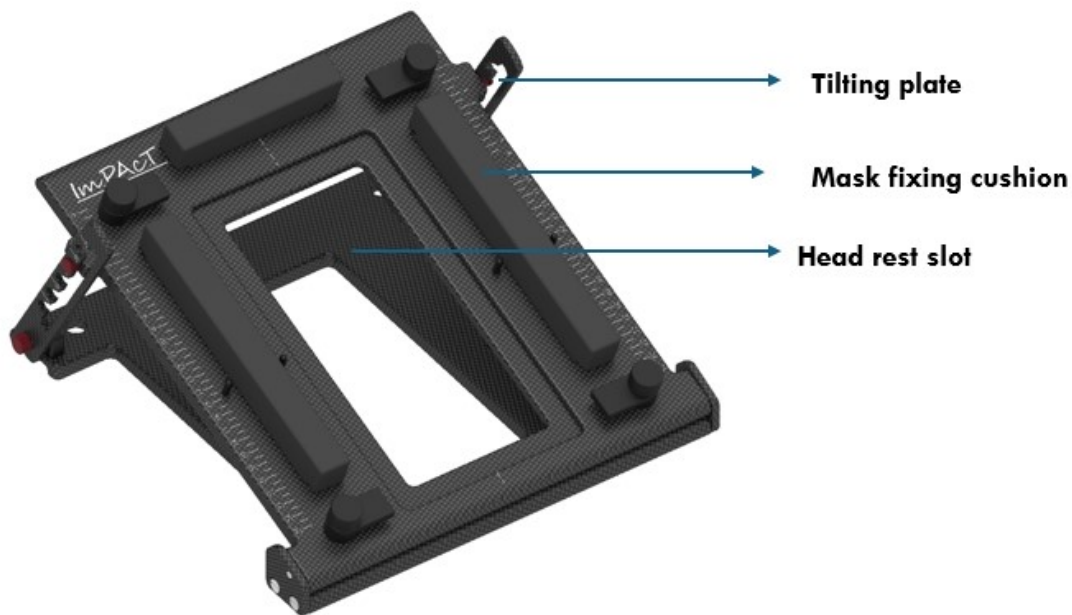
### 1.1 INTENDED USE

The primary purpose of the tilting head base plate is to position and immobilize the patient's head in a specific orientation during radiation therapy sessions. This positioning ensures that the targeted area remains consistent throughout the treatment, improving accuracy and effectiveness of treatment.

### 1.2 INDICATION FOR USE

Tilting head base plate helps minimize involuntary movements of the head during treatment sessions includes Skull base, head and neck, sinus, nasal and pituitary tumors. Immobilizing the head is critical for precise targeting of the tumor while sparing surrounding healthy tissues. The devices are also used to position the patient during image acquisition to support treatment plan on Computed Tomography (CT) unit or Simulator.

## 2. PRODUCT OVERVIEW



*Figure 1 Tilting head baseplate*

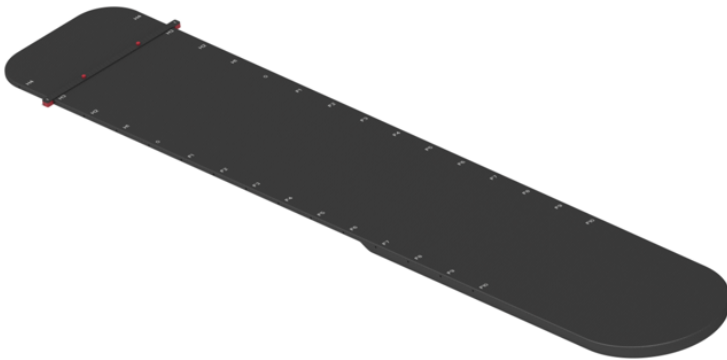


#### Warning

- Inspect the device thoroughly before use. Do not use the device if damaged.
- Prevent the surface from damage and scratching.
- Secure the device properly before positioning the patient.

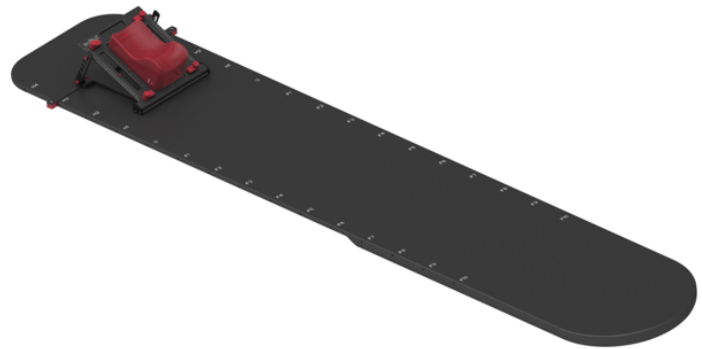
### 3. ASSEMBLING INSTRUCTIONS

1



Indexing bar placement

2

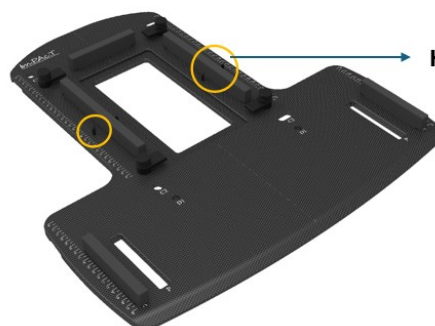


1. Tilting head base plate placement on indexing bar  
2. Headrest placement on tilting head base plate

**Step 1:** Place the indexing bar on the Couch Top and make sure that it has been fixed properly with the slots.

**Step 2:** Position the Tilting head base plate above the Indexing bar and ensure there is no movement in the Indexing bar and the base plates and also tilting head base plate can also be placed on the Head and shoulder base plate by fixing the tilting head base plate on head rest mounting pin

**Step 3:** Place the required headrest and also 3- Point head mask can be used



Head rest mounting pin

### 1.3 Compatible headrest



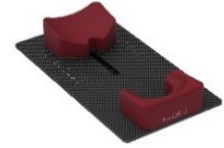
Carbon fiber headrest



Foam headrest



Posease headrest

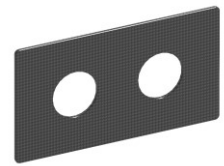


Prone headrest

- Assemble the other necessary devices (If required)
- Utilize the Pediatric headrest with adopter for pediatric patient.
- Position the patient and fix the Clamp type thermoplastic mask with mask locking cushions to immobilize.



Wedges



Pediatric headrest with adapter

## 4 TECHNICAL SPECIFICATIONS

1	Material	Carbon fiber
2	Weight	1.631 kg
3	Weight bearing capacity	120 kg
4	Pillow material	Foam

## 5 CLEANING, STORAGE AND DISPOSAL

- Avoid storing under the sun and in warm and wet environment
- Wipe thoroughly with cleaning agent like Diluted Isopropyl Alcohol of 15-20%. Allow to dry before next use
- The product can be disposed of with dry waste
- Inspect the product regularly, to check for any parts are worn or need to repair or replacement



### **Panacea Medical Technologies Pvt Ltd**

Plot #35, Malur KIADB Industrial Area,  
4th Phase, Malur – 5631 30, Kolar District,  
Karnataka, INDIA.

Website : <http://www.panaceamedical.com>,

Email : [support@panaceamedical.com](mailto:support@panaceamedical.com)